

HORST RELLECKE



start

architecture

paintings

prints

sculpture

projects

glass windows

laser shows

3D animation

vita

contact





start

architecture

paintings

prints

sculpture

projects

glass windows

laser shows

3D animation

vita

contact



Glasselephant Hamm / Germany 1981-84 Design Horst Rillecke

pop up fotos

For the 1st State Garden Fair in North-Rhine-Westphalia the ruin of the former coal washing plant of the Maximilian coalmine was altered to a walk-in-sculpture, an elephant of glass and steel, whose body has become now a greenhouse. It is the biggest building in animal figure of the world. Height 35 m, length 54 m, enclosed space approx. 20,000 cbms. Inside ten kinetic Rillecke objects are shown in a permanent exhibition.

In 2009 the Glass Elephant got a new light technology. The old fluorescent lamps were substituted by LED modules. The LEDs are suppost to generate all colours of the rainbow and a huge number of variations up to entire light shows. The installation was initiated on the occasion of the festivities for the 60th birthday of the State North-Rhine-Westphalia with a light- and sound show. Premiere of the especially composed music "Elephants delight" by the musicians of "Crystal Silence" accompanied by facade climbers of "Climbix".

newspaper "Westfälischer Anzeiger Hamm" 6/27/2009:

10.000 visitors watched the light spectacle at the elephant.

On the left, above the elephant's right eye, a white dressed man stood in the window. From below he was to be recognised only shadowy. He leant back and then forward - then again. A few glowworms had already begun their own light show before the official beginning at 11:00 p.m. - to the joy of the waiting audience. Then, finally - music. The glass elephant's trunk lighted up in glistening light, the white men let themselves down by ropes from the windows and swung green light swords. Spontaneous applause. Now head, ears and trunk of the glass elephant changed the colours suitably to the mystic background music: Orange, Yellow, green, Red, sometimes slowly, sometimes hectically. Suddenly the explosion, from the back of the concrete animal rise fireworks in the night sky. At the end the elephant shows the colours of NRW: Green, White and Red. In the late evening about 10.000 visitors pursued the half-hour light spectacle to open North-Rhine-Westphalia Fair in the Maxipark.

[start](#)

[architecture](#)

[paintings](#)

[prints](#)

[sculpture](#)

[projects](#)

[glass windows](#)

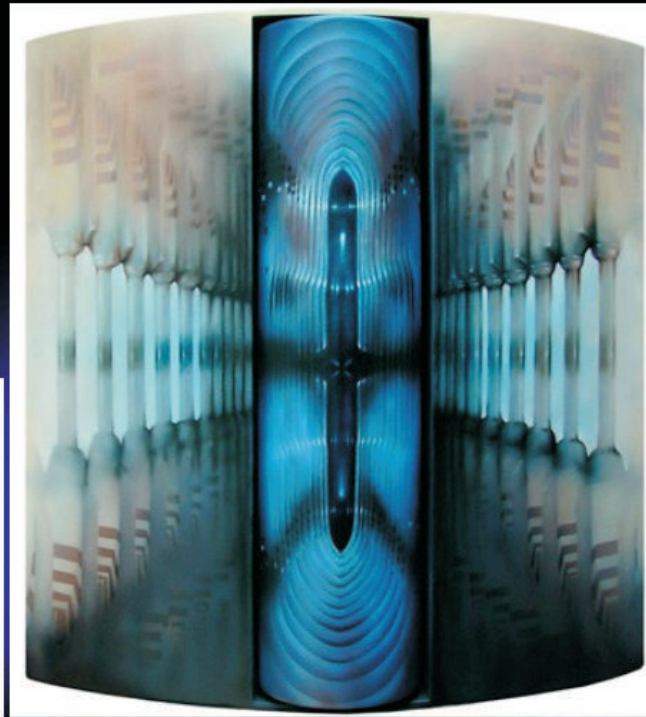
[laser shows](#)

[3D animation](#)

[vita](#)

[contact](#)

Paintings on canvas and hardboard
Mixed techniques on paper
Drawings



2003/07 The Refuge
Acrylic and oil colours on hardbord
133 x 134 cm



2001/01 Lucifer's Grand Tour
Acrylic and oil colours on canvas
160 x 200 cm

Special edition 2010

"Yesterday"

etching from 3 plates in 5 colours

size of paper 60 x 80 cm

size of plate 40 x 54 cm

100 prints (10 a.p.) 290,00 €

edition price 240,00 €



Special edition 2010

"Bellibrushing"

etching from 3 plates in 5 colours

size of paper 60 x 80 cm

size of plate 40 x 54 cm

100 prints (10 a.p.) 290,00 €

edition price 240,00 €



The sculptures are mainly kinetic objects. Only the videos can show how they move. There are ten of these objects inside the Glass Elephant. All sculptures up to the year 2002 are documented in "Werksverzeichnis Plastik" / Kettler-Verlag, Germany.

start

architecture

paintings

prints

sculpture

projects

glass windows

laser shows

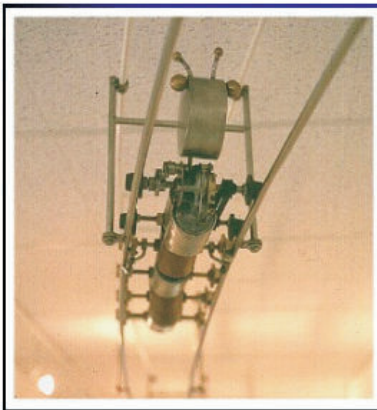
3D animation

vita

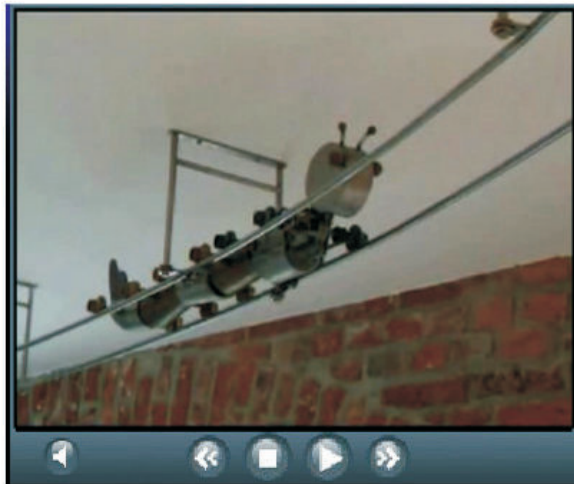
contact



..... himself with "Lenin's Comforter"



"Carterpillar"
refined steel and bronze
app. 60 cm 1992



**Competition result
of the State parks in
North-Rhine-Westphalia 2007**

1. Price with the concept
"KLANGWALD - SOUNDING
FOREST". A round footpath in
the Amsberg forest at the south
of Lake Möhne with ten stations
featuring sculptures and instal-
lations, which may be experi-
enced by all senses beyond the
pure design. The visitors are
invited to operate the objects or
to listen to them while the wind
does it for them.



[start](#)

[architecture](#)

[paintings](#)

[prints](#)

[sculpture](#)

[projects](#)

[glass windows](#)

[laser shows](#)

[3D animation](#)

[vita](#)

[contact](#)

[start](#)

[architecture](#)

[paintings](#)

[prints](#)

[sculpture](#)

[projects](#)

[glass windows](#)

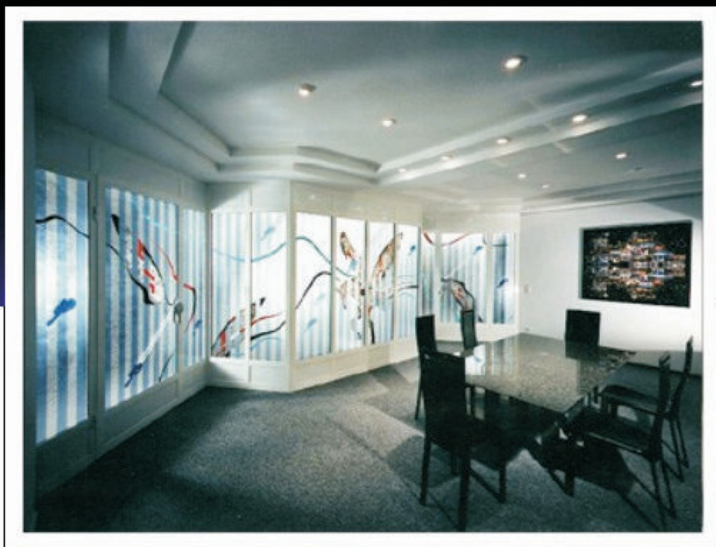
[laser shows](#)

[3D animation](#)

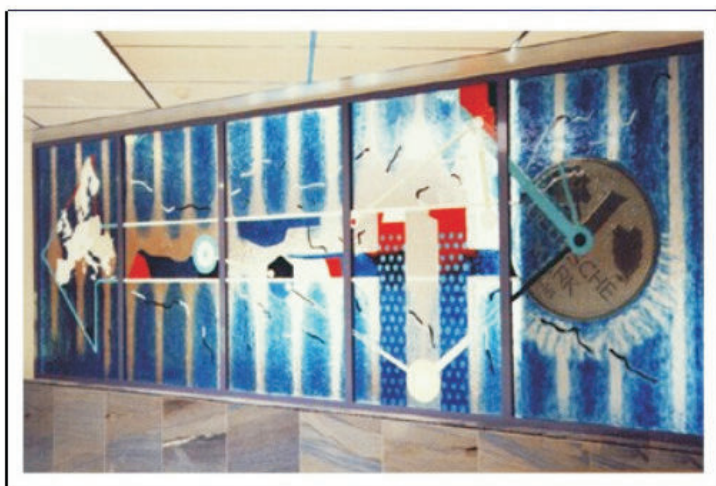
[vita](#)

[contact](#)

"The Erfurt Window"
fusing glass
1,70 x 24,50 m in 8 pieces
Erfurt / Germany / 1996-67

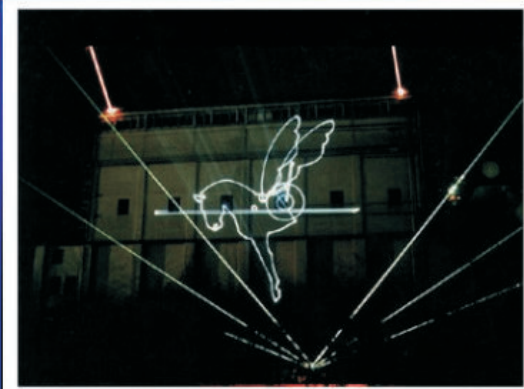


**"The Deutsch-Mark
on it's way to Europe"**
Fusing glass
1,90 x 6,25 m in 5 pieces
Werl / Germany 1998





Laser show "HAMMillennium"
City of Hamm, 2000
app. 50.000-60.000 visitors



Laser show "From Altamira to Mars"
Maximilianpark Hamm, 1994
app. 5.000 visitors

- start
- architecture
- paintings
- prints
- sculpture
- projects
- glass windows
- laser shows**
- 3D animation
- vita
- contact

- start
- architecture
- paintings
- prints
- sculpture
- projects
- glass windows
- laser shows
- 3D animation**
- vita
- contact



The 3D animation "THE ASTRO PARK" is a 60 minutes journey through a fantasy building with it's various virtual rooms: from space with flying objects to a chess room with kinetic sculptures, the room of painting, which can only be entered by a tube of paintings, the room of printing, the movie theatre, the gallery and some stations outside.

HORST RELLECKE

start
architecture
paintings
prints
sculpture
projects
glass windows
laser shows
3D animation
vita
contact



1951 born in Duisburg, Germany
1970 high school graduate
1972 architecture studies at the University of Stuttgart
first paintings
1973 first sculptures from bronze, glass and high-grade steel
1975 scholarship of the Aldegrever Society
the first etchings
1977 architecture dissertation (Hans Kammerer)
1978 assistant in the Institute for drawing and Modelling University of Stuttgart
1979 scholarship of the German Academic Exchange Service (DAAD)
Study in the University of California Los Angeles, (Charles Moore)
1980 trips through North America and Central America
1981 conception of the 35-m-high glass elephant for the State Garden Fair Hamm
1982 doctorate / doctoral thesis: Relations between Pop and architecture
1984 completion of the glass elephant
1986 first great kinetic sculptures,
1987 concept for the interior Glass elephants with a total of 10 kinetic objects (one per year)
1988 study trip in Italy
1989 1st price competition tax office Zeven sculpture „Tenth“
1992 1st price competition State Garden Fair Gelsenkirchen (with Wedig Pridik)

1993 1st price competition State Garden Fair Oberhausen (with Lazlo Czinki)
concept for the rebuilding the coal mixing building
1994 laser show "from Altamira up to Mars"
1997 completion of the 10th object for the Glass Elephant
Laser show "Decathlon" in the Maximilianpark
first glass windows
1998 rebuilding of the former coal mixing building of the coalmine Osterfeld to the garden cathedral for the State Garden Fair Oberhausen 1999
1999 sculpture "Rain with Sunshine - Steel Cloud" in Lake Möhne
2000 Laser show "HAMMillennium" city centre Hamm from the 27.11.99 - 1/2/2000
project "Glowlight staging of wind turbines" at Lake Möhne
2001 retrospective exhibition in the Gustav Lübcke Museum Hamm
2003 light installation "Rainbow Bridge" Hamm
2004 jubilee exhibition "20 years" Glass Elephant Maximilianpark Hamm
2005 1st prize in the competition "Hamm Vision" with the steel sculpture "Lip Jumper"
2007 1st prize with the land competition of the Naturparke in North-Rhine-Westphalia with the project "Sounding Forest"
2009 60. Anniversary North-Rhine-Westphalia Light- and sound show at the Glass Elephant

Startseite
Architektur
Malerei
Druckgrafik
Plastik
Projekte
Glasfenster
Lasershow
3D-Animation
Vita

Kontakt



HORST RELLECKE

Impressum

name:

Horst Rellecke

website:

<http://www.horst-rellecke.de>

name of firm:

Dr.Ing. Horst Rellecke

address:

Hermann-Kätelhön-Str. 6 . D-59519 Möhnesee

phone:

049-2924-5292

fax:

049-2924-2090

profession:

artist

official e-mail address:

info@horst-rellecke.de